

Structures



Gristmill in Winter, 22 x 30, watercolor
(Sudbury, MA at Longfellow's Wayside Inn)



Waiting, 12 x 16, watercolor



Grist Mill Bridge, 24 x 18, watercolor



Nova Scotia Farm, 20 x 16, oil on canvas



Quiet at the Cape, 8 x 10, oil on canvas



**From a Cambridge Window, 18 x 24, acrylic on canvas
(Somerville, MA)**



Last Patch of Winter Snow, 18 x 24, oil on canvas



Beacon Hill on the Charles, 16 x 20, oil on canvas



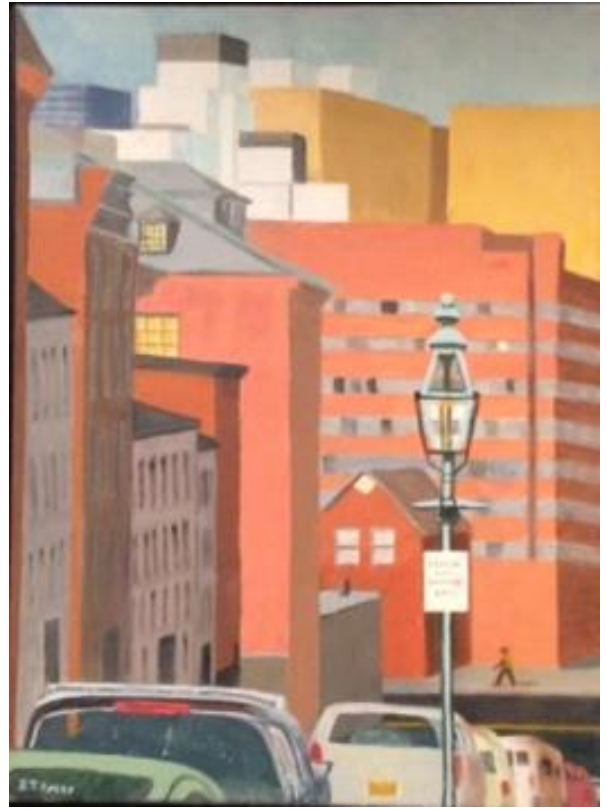
Saxonville Old Mill Bell Tower, 16 x 20, oil on canvas



Home in Connecticut, acrylic



1635 Bridge at Wayside Inn, 14 x 18, acrylic



**Beacon Hill to Mass General Hospital, 24 x 18
Oil on canvas**



**Home and Garden, 12 x 12, oil on canvas
(Concord, MA)**



Next Door Neighbor's House, 9 x 12, oil on board



Old Shooting Lodge, Yorkshire, 12 x 20, oil



September Shade, 9 x 12, watercolor



Late Summer, 9 x 12, watercolor



Kansas Sunset, 9 x 12, watercolor



The Mill in Autumn, 9 x 12, watercolor



Shady Autumn Coolness, 9 x 12, watercolor



Winter Morning, 9 x12, watercolor



Forgotten Homestead, 9 x 12, watercolor



Autumn Farm, 9 x 12, watercolor



Oceanside Home, 9 x 12, watercolor