

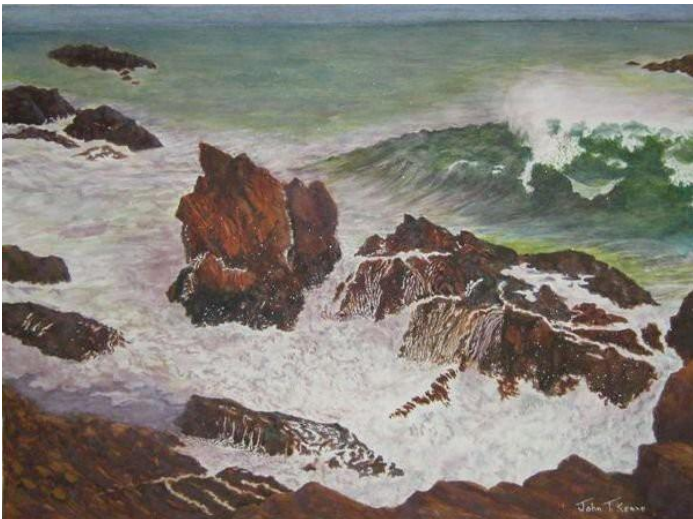
## Coastal



**Along the High Dunes, 18 x 24, oil on canvas**



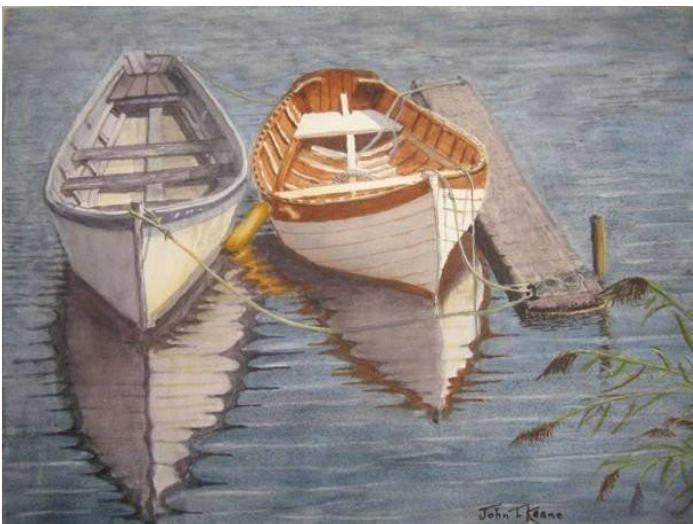
**After the Storm, 18 x 24, watercolor**  
(Nova Scotia, Peggy's Cove, the day after Hurrican Earl)



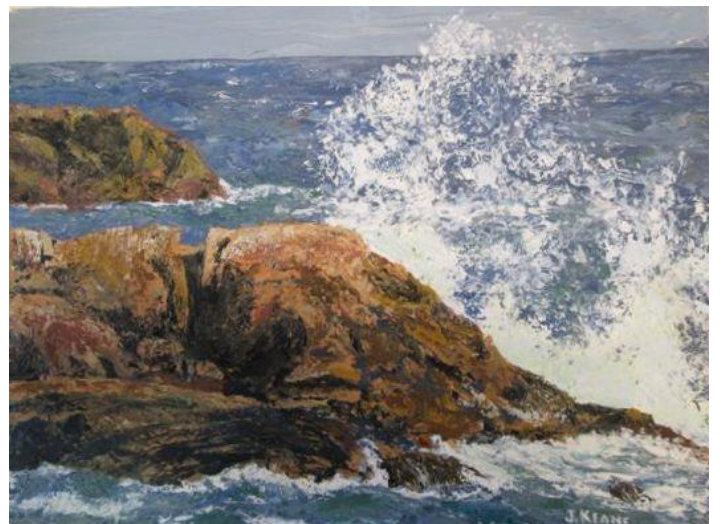
**Undeclared, 18 x 24, watercolor**  
(Rockport, MA)



**Drifting at Anchor, 12 x 14, watercolor**  
(Eastham, MA shore)



**Day of Rest, 12 x 14, watercolor**  
(Essex River harbor area)



**Unmovable, 12 x 15, acrylic**



**Along the Coast, 18 x 24, oil on canvas**



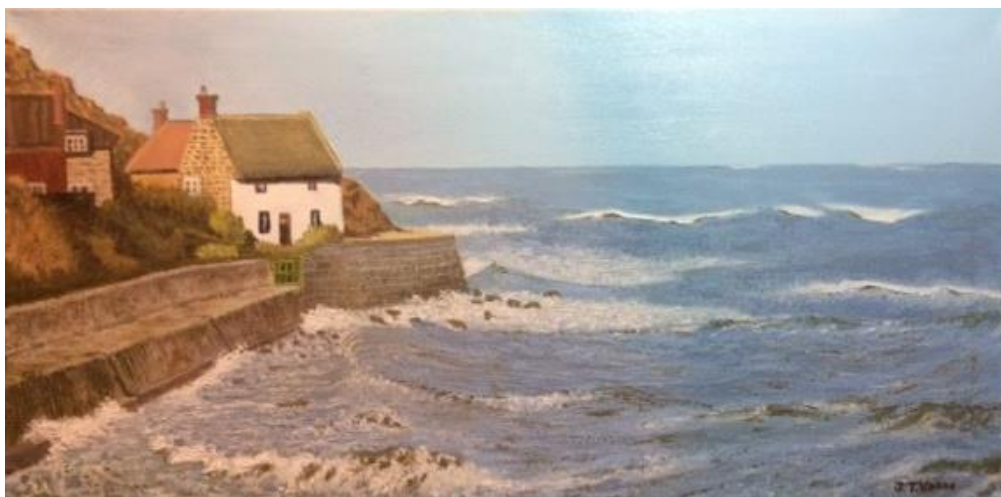
**Over the Marsh (Ipswich, MA), 11 X 14, oil on canvas**



**Passing the Lighthouse, 12 x 16, oil on canvas  
(Woods Hole, MA)**



**Hurricane Jose at Eastham 2017, 9 x 11, oil on canvas  
by pallet knife**



**Yorkshire Coast, 12 x 24, oil**



**Harbor in Yorkshire, 12 x 24, oil**



**Late Afternoon, 18 x 20, oil on canvas**